



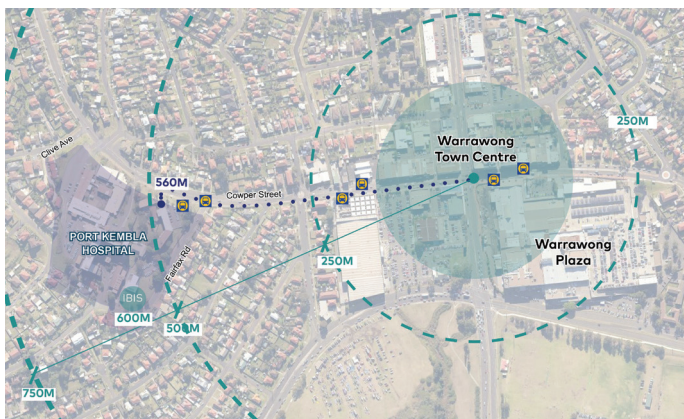
As part of the new Shellharbour Hospital and Integrated Services Project, the NSW Government is building a brand new, purpose built, community health centre on the south east corner of the Port Kembla Hospital site.

The Warrawong Community Health Centre will bring together a range of services and provides an opportunity to co-locate a range of community services from Port Kembla Hospital and across the District in one single hub.

The new Warrawong Community Health Centre will meet the needs of the local community and complement care provided in a hospital setting, or alternatively, work with patients and clients to avoid their hospitalisation.

The Centre will enhance healthcare access by:

- Responding to local population needs and providing a service close to home
- Using evidence-based models of care which wrap around the individual, providing a coordinated approach to care
- Building relationships and partnerships
- Offering a community and personcentric integrated care service
- Identifying and reducing the medical and non-medical determinants of health
- Providing culturally appropriate spaces



## The Site

The location for the new Warrawong Community Health Centre is at Port Kembla Hospital, on the corner of Fairfax Road and Cowper Street, approximately 700m from the Warrawong Town Centre.

The site is accessible by public transport, with a bus stop located on Cowper Street. Pedestrians can access the Centre from the main entrance on Cowper Street, with alternative access via Fairfax and Vermont Roads.



## Summary of Services



### Kids and Families

- Child and Adult Allied Health Services
- Audiology – servicing Paediatrics to Adulthood
- Warrawong Child and Family Health Nurse Service
- Binji and Boori (Aboriginal Maternal Infant Child Health Service)
- Antenatal Services



### Community Health Nurse Led Clinics

- Asthma
- Continence
- Stoma
- Wound care



### Drug and Alcohol

- Needle and Syringe Program (First Step Program)
- Drug and Alcohol Counselling Service



### Sexual Health Service



### Community Mental Health



### Equipment Loan Pool

- A loan pool of aides to support rehabilitation at home, for example walking frame, wheelchair or hoists

You can find out more about the new Warrawong Community Health Centre at [www.shellharbourdevelopment.health.nsw.gov.au/projects/warrawong-community-health-centre](http://www.shellharbourdevelopment.health.nsw.gov.au/projects/warrawong-community-health-centre)

You are also invited to send any feedback, suggestions, or comments to [HI-shellharbourdevelopment@health.nsw.gov.au](mailto:HI-shellharbourdevelopment@health.nsw.gov.au)