

Fact Sheet

New Shellharbour Hospital

December 2024

Piling work

Main works construction for the new Shellharbour Hospital is now underway as part of the more than \$780 million New Shellharbour Hospital and Integrated Services Project, funded by the NSW and Australian governments.

BESIX Watpac has been engaged by Health Infrastructure to build the new Shellharbour Hospital.

To support construction of the new Shellharbour Hospital, piling is required to build solid foundations for the facility.

What is piling?

To build the new hospital, we'll first need to install concrete foundations, which are called 'piles'.

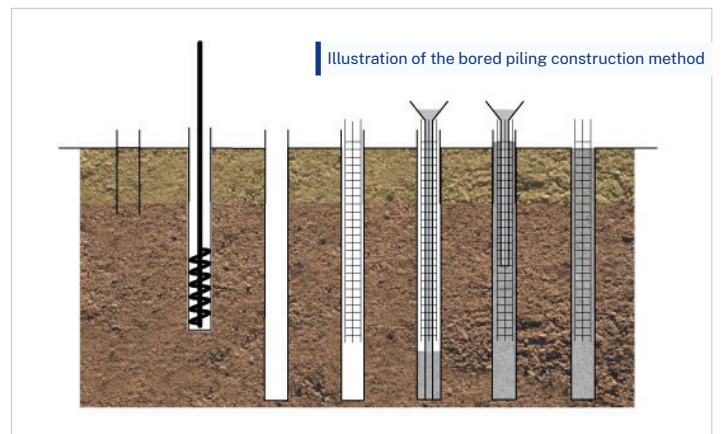
The installation of piles into the ground creates a solid foundation to support the larger structures above. There are different methods of piling depending on the type of soil and the specific needs of the structure being built.

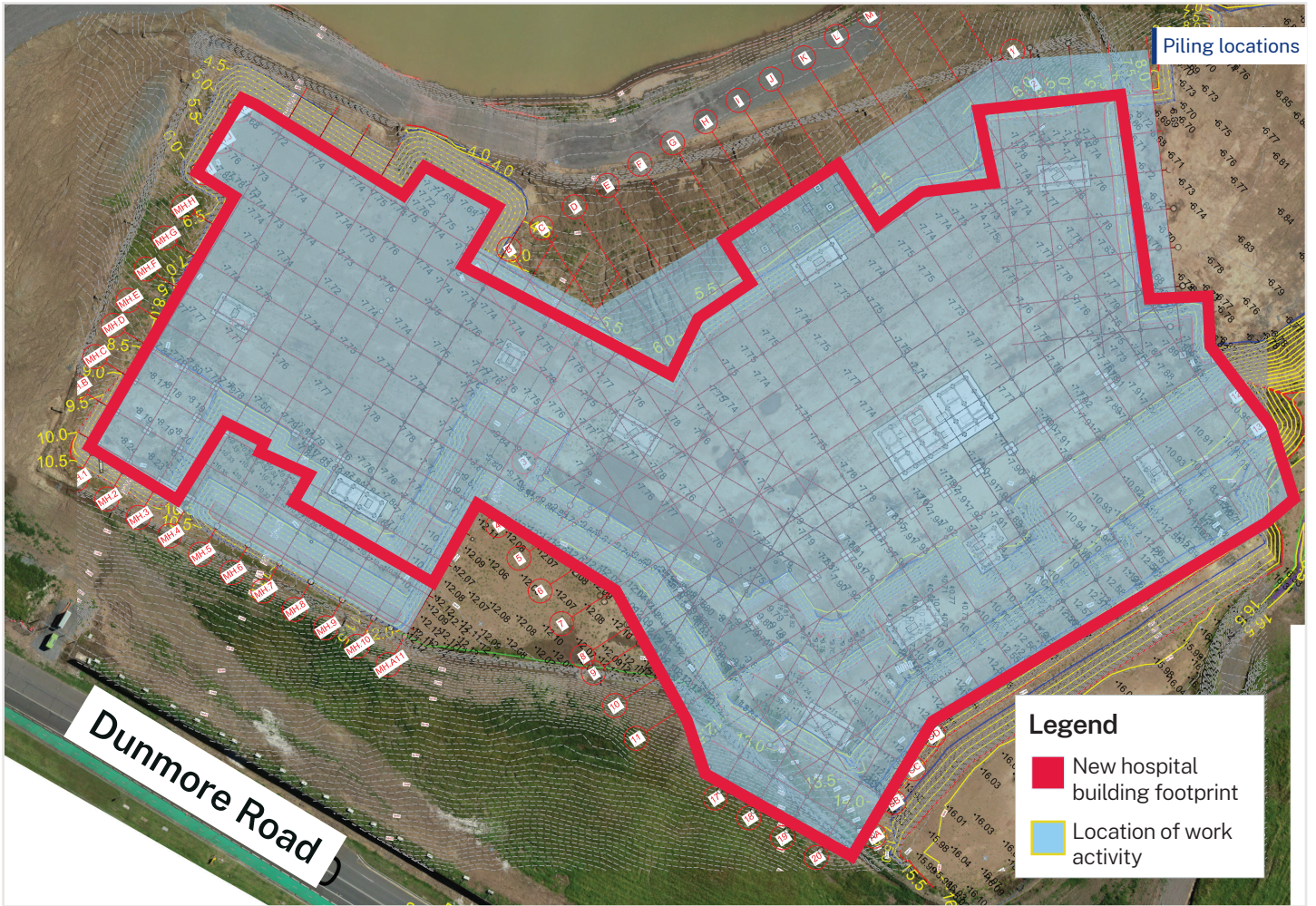
Piling we are using on new Shellharbour Hospital

On this project, we will be using the bored piling method to minimise impacts to surrounding neighbours.

Compared to other piling methods i.e. driven piles method; the construction of bored piles generates significantly less disruptive noise and reduces ground vibrations.

This method involves drilling a hole to the desired depth with a piling rig, lifting in the piles steel reinforcement and filling the hole with concrete.





How will this work affect you?

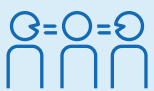
Piling works may cause some noise, vibration and dust. To help reduce the impacts, most of our work will take place during our approved construction working hours between 7am to 6pm Monday to Friday, and 8am to 1pm on Saturday, weather permitting.

There may be times where some works will be undertaken outside these hours. We will notify you in advance if we need to work outside these times.

How we are managing these works

To minimise the impact of work, other measures include:

- Realtime noise and vibration monitoring to provide immediate feedback to the project team, ensuring any noise and vibration impacts are understood early and minimised.
- Respite periods will be implemented during high impact vibration or noise generating activities.
- Regular training and education of all onsite workers to ensure they are aware of the sites noise and vibration responsibilities and mitigation measures.
- Community consultation and notices relating to the status of the project and any upcoming works which may affect surrounding residents and businesses.



For an interpreter, call **131 450** and ask them to call **02 9978 5402**

For more information

E: HI-shellharbourdevelopment@health.nsw.gov.au

W: shellharbourdevelopment.health.nsw.gov.au

For questions relating to construction, contact BESIX Watpac:

T: (02) 8741 7400

E: receptionnsw@watpac.com.au